

The State of Oklahoma

Total listed Types and Towns: 542



INDIAN TERRITORY

The state is normally abbreviated, OKLA., unless listed (Ie: OK)

The following are illustrations of Types referenced by a PIC Type Note in the listings.



2.1672



2.5256



2.4273 badge cancel



2.4643



SLR 7.4614

vert box line?



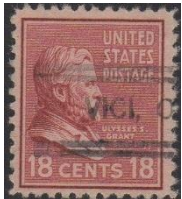
0.5643

fancy lines



2.46446

wide T/S



0.1543 and an example showing state is spelled in full



VICI with double bars A&B

The following are examples of different styles found from Oklahoma towns, with type numbers.



1.5274



2.4214



2.4243



2.4274



2.4283



2.428



2.4293



2.429



2.44(5/9)



2.4593



2.46



2.46 CON



2.460005

OK



2.464405

OK



2.46(64/45)



2.467005



2.46742



2.64(5/9)



2.660005



2.669



4.4254



4.4274



4.4543



4.4643



4.4614 CON



4.5253



7.4643 DLR

OKLAHOMA March 19, 2019

Type	Note	Town	Note	Usage
2.4284		ADA		1938
0.42932		ADA	CQ	1926
2.4664		ADAIR	CQ	1926
2.4274		AFTON	CQ	1938
2.46	CON	AFTON,		1938
2.464654		AFTON		1954
2.4653		ALINE,		1938, 40, 61
1.1283	ASA	ALLEN,		1914
4.4254		ALLEN		1922
1.1243		ALTUS,		1937, 38, 44A, 49
1.1644		ALTUS,		1917, 19
1.264401		ALTUS,		1947, 47A, 48
2.427		ALTUS,		1926, 33
2.4284		ALTUS,		1917
2.42932		ALTUS,		1930, 32, 40
2.4664		ALTUS	CQ	1930
4.4254		ALTUS		1922, 26
4.4543		ALTUS,		1922, 26, 32
4.4643		ALTUS		1917, 22
2.466454		ALVA		1954
4.4254		AMES		1922
2.46	CON	AMORITA,		1954
2.425		ANADARKO,		1922
1.5656		ANTLERS	CQ	1926, 38
2.46		ANTLERS	CQ	1922
2.56		ANTLERS	CQ	1938
2.669		ANTLERS	CQ	1938
4.4274		ARAPAHO		1932
2.46	CON	ARNETT,		1954
2.64(5/9)		ARNETT		1961
2.46641		ASHER,		1938
1.1284		ATOKA,		1932
1.66(5/9)		ATOKA		1968
2.4264		ATOKA,		1926
2.4664		ATOKA	CQ	1917D
2.46642		ATOKA,		1926
2.4694		ATOKA	CQ	1938
2.64(5/9)		ATOKA		1968
1.1673		BALKO		1938
1.2263		BARNSDALL,		1945
1.46436		BARNSDALL		1943

2.46436		BARNSDALL,	1922, 26, 30
1.2644		BARTLESVILLE,	1922
2.460005		BARTLESVILLE, / OK	1959
2.4643		BARTLESVILLE	CQ 1934
2.4293		BEAVER	CQ 1938
2.4664		BEAVER	1938
1.1274	ASA	BEGGS,	1913
2.46	CON	BETHANY,	1967
2.469		BINGER,	1938
2.46	CON	BIXBY,	1938, 54
1.4544		BLACKWELL,	1917
4.4254		BLACKWELL	CQ 1918, 22
4.42(54/74)		BLACKWELL	1926
4.4643		BLACKWELL	1917, 18, 22
1.1643		BLAIR,	1932, 38, 45
2.46	CON	BLAIR,	1954
2.469		BLAIR	1938, 55
2.425		BLUEJACKET	CQ 1938
2.425		BOISE CITY	1926, 38
2.465		BOKCHITO	CQ 1923
2.465		BOKOSHE,	1938
2.4283		BOLEY	CQ 1938
2.4664		BOLEY,	1931
2.4663		BOSWELL,	1938
4.4254		BOWLEGS	1926, 32
2.46		BRAGGS	CQ 1926
2.46		BRAMAN,	CQ 1922
2.46	CON	BRAMAN,	1938
2.4644		BRIDGEPORT	CQ 1914
1.2644		BRISTOW,	1914
2.4263		BRISTOW,	1922, 26, 31
2.46		BRISTOW,	1926
2.4243		BROKEN ARROW	CQ 1940
2.4243		BROKEN BOW	CQ 1926
2.64(5/9)		BROKEN BOW	1938, 54
4.4254		BUFFALO	1926
2.46	CON	BUFFALO,	1948
2.4663		BUFFALO,	1938, 40
2.46432		BYARS,	1945
1.1243		CADDO,	1926
2.4653		CALERA,	1938
2.46	CON	CALUMET	1931D, 38
1.1562		CALVIN,	1938

1.1662		CALVIN,		1938, 43
4.4254		CALVIN		1926
2.4283		CANTON	CQ	1940
2.46	CON	CANTON,		1938, 54, 62
2.469		CANTON	CQ	1938
2.4643		CANUTE,		1938, 54
1.2172		CAPITOL HILL,		1922, 23, 26
1.1643	CON	CARDIN,		1926, 38
1.1644		CARDIN,		1932, 38, 54
1.166354		CARDIN,		1938, 68
2.4664		CARDIN		1931
1.4293		CARMEN		1938, 54
2.46		CARMEN,		1926, 32
2.425		CARNEGIE	CQ	1922
2.4653		CARNEGIE	CQ	1938
2.4656		CARNEY,		1954
2.567		CASHION,		1932
1.1644		CATOOSA,		1947A
2.46		CATOOSA,		1959D
2.46		CEMENT	CQ	1963
2.425		CHANDLER	CQ	1922
4.46141		CHANDLER		1926, 31
2.46	CON	CHANDLER,		1926
2.46		CHANDLER	CQ	1908
1.1293		CHELSEA,		1938
1.2272		CHELSEA,		1931
2.4544		CHELSEA,		1922
2.46		CHELSEA,		1922
2.45		CHEROKEE,		1922, 26, 34
2.46		CHEROKEE,		1938
2.4663		CHEROKEE,		1926, 31
2.64(5/9)		CHEROKEE		1938
2.46		CHEYENNE,		1940
4.42(54/74)		CHEYENNE		1926
2.4544		CHICKASHA	CQ	1908
4.4644		CHICKASHA		1926
0.4614		CHICKASHA		1931
0.5644		CHICKASHA		1925
1.26		CLAREMORE,		1922
1.5613		CLAREMORE,		1908
2.4674		CLAREMORE	CQ	1954
1.1243		CLAYTON,		1932
2.46		CLAYTON,		1961

4.4254		CLAYTON		1926
2.46		CLEVELAND,		1913
2.4644		CLEVELAND	CQ	1914
4.4274		CLEVELAND		1926
1.1643		CLINTON,		1932
2.46		CLINTON	CQ	1914
2.4614		CLINTON SHERMAN / AFB, OKLA.		1959
2.46		COALGATE,		1926, 31, 32
2.425		COLD SPRINGS	CQ	1926
1.2643		COLLINSVILLE,		1938
2.4214		COLLINSVILLE,		1912, 14
2.46	CON	COLLINSVILLE,	CQ	1938
2.64(5/9)		COLLINSVILLE		1938, 54, 62
4.4273		COLONY		1926
2.4663		COMANCHE	CQ	1926
1.2644	ASA	COPAN,		1917
2.46001		COPAN,		1922
2.46		CORDELL,		1926
2.64(5/9)		CORDELL,		1938, 54
2.669		CORDELL		1926
0.4643		COVINGTON		1917
2.425		COVINGTON,		1919
2.4263		CRESCENT	CQ	1926
2.46		CRESCENT	CQ	1954
2.46	CON	CRESCENT,		1938-48
2.669		CRESCENT		1938
2.46		CUSTER,		1938
2.466		CUSTER		1938
2.5256	PIC	CYRIL,		1943
1.264301		DACOMA,		1938
2.4663		DAVIDSON	CQ	1928, 32
2.6664		DAVIDSON		1938
2.427		DAVIS,		1926
2.46		DAWSON	CQ, Sta	1938
2.4273	PIC	DEER CREEK		1938
1.4294		DEPEW,		1917, 21, 22, 23, 26
2.4294		DEPEW,		1938
2.4643	PIC	DEPEW,		1922, 23, 26, 32
2.46	CON	DEWEY,		1954
2.4284		DOVER	CQ	1938
2.4293		DUSTIN	CQ	1926
1.2572		EAKLY,		1954
2.465		EDMOND	CQ	1926, 31, 38, 40

2.46632		EDMOND	CQ	1931
2.46	CON	ELDORADO,		1932
2.46		ELDORADO		1954
2.46		EL RENO,		1908
2.4674		EL RENO	CQ	1912
2.464408		ENID, OK		1968
1.1663		ERICK,		1938
2.4694		ERICK		1938
1.2272		EUFAULA,		1908, 17
1.4642		EUFAULA,		1917, 22
7.4643	DLR	FAIRFAX		1917, 18
1.1544		FAIRVIEW,		1922
1.228		FAIRVIEW,		1917
2.46		FAIRVIEW	CQ	1938, 40
2.46	CON	FAIRVIEW,		1932, 34, 38
2.64(5/9)		FAIRVIEW		1955
7.4643	DLR	FARGO		1917, 22
0.464455		FLETCHER, / OK		1963
0.4253		FORT COBB,		1954
2.4654		FORT COBB,		1932
2.64(5/9)		FORT COBB		1938
2.461		FORT GIBSON,		1938
2.465		FORT GIBSON	CQ	1926
1.264301		FOSS,		1938, 40
2.46		FOSS,		1938
2.64(5/9)		FREDERICK		1938, 54
2.669		FREDERICK	CQ	1938
2.46		FREDERICK,		1912, 26
2.460005		FREEDOM, / OK		1963
2.4294		GAGE	CQ	1938
2.46		GAGE,		1938
2.46642		GAGE	CQ	1932
2.64(5/9)		GAGE		1959
2.467		GARBER,		1931
2.460005		GARBER / OK	CQ	1968
2.467005		GARBER / OK	CQ	1954
4.4254		GARBER		1926
2.4293		GEARY	CQ	1931
2.46	CON	GEARY,		1931D, 54
2.4664		GEARY		1908, 14
2.469		GEARY	CQ	1938
2.4263		GLENCOE,		1926
2.46		GOLTRY,		1958

2.46		GOODWELL,		1932
2.4664		GOTEBO	CQ	1922
2.465		GRANDFIELD	CQ	1932, 38
2.4293		GROVE,		1926, 38
2.46		GROVE,		1938-48
2.469		GROVE,		1938
1.1644	ASA	GUTHRIE,		1917
2.4656		GUTHRIE,	CQ	1954
2.4293		GUYMON,		1931
2.46		GUYMON	CQ	1913
2.46	CON	GUYMON,		1938
2.4663		GUYMON,		1948
2.4664		GUYMON	CQ	1917
2.469		GUYMON,		1946
2.46		HAMMON,		1940
2.46001		HAMMON	CQ	1922
2.4263		HAMMON,		1926, 31, 32
4.4254		HAMMON		1926
1.1243		HANNA,		1938
1.1643		HANNA,		1943
1.1644		HARRAH,		1959
4.42(54/74)		HARRAH		1926
2.421		HARTSHORNE,		1932
2.46	CON	HARTSHORNE,		1954
2.460005		HARTSHORNE, / OK		1978, 81
2.56		HARTSHORNE		1917
2.625		HARTSHORNE	CQ	1954
7.4643	DLR	HASKELL		1917, 22, 32
2.46	CON	HEALDTON	CQ	1926
2.525		HEAVENER,		1917
2.46		HEAVENER,		1926, 31, 38, 54
2.460005		HELENA, / OK		1977
0.4663		HENNESSEY	CQ	1926
2.4214		HENNESSEY	CQ	1926
4.5253		HENNESSEY		1917, 17D, 22, 23, 26
4.5253	CON	HENNESSEY		1938
1.2264		HENRYETTA,		1917
2.467		HINTON,		1959D
2.64(5/9)		HINTON		1954
1.2264		HITCHCOCK,		1938
2.425		HITCHCOCK		1926, 31
1.425		HOLDENVILLE	CQ	1922
4.4613		HOLDENVILLE	CQ	1926

1.4643		HOLLIS,		1931, 33
1.4646		HOLLIS,		1933
2.4283		HOLLIS,		1926
2.4293		HOLLIS,		1926
2.46		HOLLIS,		1938
2.46	CON	HOLLIS,		1938
2.466454		HOLLIS,		1938, 40
4.4254		HOLLIS		1917, 22
2.4293		HOMINY	CQ	1933
2.44(5/9)		HOMINY		1954
2.46		HOMINY,		1922, 23
2.460005		HOOVER, / OK		1968
2.460005		HOWE, / OK		1959D
1.1663		HUGO,		1917
1.2644	ASA	HUGO,		1938
2.4264		HUGO,		1926, 40
2.42644		HUGO	CQ	1938
2.4293		HUGO,		1926, 32
2.46	CON	HUGO,		1938
2.46002		HUGO	CQ	1919, 22
2.4664		HUGO,		1922
2.46642		HUGO,		1926, 34
2.469		HUGO		1925SD, 38, 54
2.64(5/9)		HUGO		1938, 54
2.4653		HULBERT	CQ	1938
2.46		HUNTER	CQ	1938
2.4264		HYDRO	CQ	1938, 49
4.42(54/74)		HYDRO		1926
2.4293		IDABEL,		1931, 38
2.46		IDABEL,		1923
2.4674		IDABEL,		1923, 26, 30, 31, 32
2.46(64/45)		IDABEL,		1926, 31
1.1644		INOLA, / OK		1954
2.467005		INOLA, / OK		1968
2.4644		JENNINGS,		1926
2.669		JENNINGS		1938
0.4563		JENNINGS	CQ	1922
2.42642		KAW		1938
2.46		KAW,		1938, 54
2.46	CON	KELLYVILLE,		1954
1.5273		KEOTA,		1917
2.4664		KEOTA,		1925
1.2543		KEYSTONE,		1938

2.4214		KINGFISHER	CQ	1933, 34
2.425		KINGFISHER,		1917, 23
2.46		KINGFISHER,		1954
2.4663		KINGFISHER	CQ	1938, 40
2.64(5/9)		KINGFISHER		1938
2.669		KINGFISHER	CQ	1938
2.4256		KIOWA	CQ	1938
2.4664		KIOWA	CQ	1914, 32
1.1213		KREBS,		1917
1.2273		KREBS,		1921
2.460005		LAWTON, / OK		1968
2.4664		LAWTON	CQ	1917
1.1642		LEEDEY,		1938
1.1644		LEEDEY,		1934
0.46	CON	LEEDEY,		1938
4.4254		LEEDEY		1923, 26
4.4644		LEEDEY		1926, 31
2.465		LONE WOLF,		1946, 47
2.64(5/9)		LONE WOLF		1954
1.1292		LUGERT,		1945
2.46		MADILL	CQ	1917
2.46452		MADILL		1925SD
2.46		MANGUM,		1908
2.469		MANGUM,	CQ	1938
2.460005		MANGUM, / OK		1968
2.460005		MANNFORD, / OK		1968
2.425		MARIETTA,	CQ	1917
2.46		MARIETTA,		1908, 31, 38
2.46		MARLOW,		1922, 32
2.64(5/9)		MARSHALL	CQ	1931D
1.6273		MCALESTER		1922
3.6*2(83/43)		MCALESTER OKLA. / (NORTH MCALESTER STATION)	SMc	1917D, 26
4.4243		MCALESTER,	SMc	1916, 22, 23, 26
4.46434		MCALESTER	CQ,SMc	1917
4.4643		MCALESTER	SMc	1916, 22, 26
2.46		MCCLOUD,	SMc	1954
2.64(5/9)		MEEKER		1938, 63A
4.4274		MEEKER		1926, 32
1.2644		MIAMI,		1929
1.46(63/43)		MIAMI,		1917
2.4663		MOORELAND,		1938
2.64(5/9)		MOORELAND		1938

4.4643		MOORELAND		1917, 22, 23, 26, 32
1.1642		MORRISON,		1938
2.669		MORRISON		1938
1.4674		MOUNDS		1938, 40
2.5644		MOUNTAIN VIEW		1934
7.4643	DLR	MULDROW		1917, 19
1.1644		MULHALL,		1948
4.4643		MUTUAL		1917
2.46		NARDIN	CQ	1926
2.46742		NASH,		1914
2.46952		NASH,		1938
2.4263		NEWKIRK,		1926, 31, 31D
2.46		NEWKIRK,		1913
2.46	CON	NEWKIRK,		1954
7.4614	PIC,SLR	NEWKIRK,		1923, 26, 29-32, 36, 38, 40, 45
2.4653		NEWKIRK,		1940
2.46		NORMAN	CQ	1908
2.4664		NORMAN		1914, 22
2.660005		NORTH MIAMI / OK	CQ	1968
2.4663		OAKWOOD,		1932
2.4284		OILTON	CQ	1914
2.44(5/9)		OILTON		1954
2.4263		OKARCHE,		1938
2.46		OKARCHE,		1926, 38, 54
2.46	CON	OKARCHE,		1954
2.46		OKEENE	CQ	1923
2.4293		OKEMAH,		1938
2.46		OKEMAH,		1922, 26, 30, 32
1.2643	ASA	OKLAHOMA,		1917
2.4254		OKLAHOMA		1917
2.5273		OKLAHOMA	CQ	1914, 17
4.4614		OKLAHOMA CITY		1917, 17D, 22, 23, 26-30D, 32
4.4254		OLUSTEE		1922
0.5644		OLUSTEE,		1922, 26, 30, 31, 31D, 32
0.5644	PIC	OLUSTEE,		1917D, 26
2.425		ORLANDO,		1926
0.4693		OSAGE		1922
2.4284		PADEN,		1922, 26
2.46		PAULS VALLEY,		1922
1.1661		PAWHUSKA OKLA. USA		1926, 38
1.1183		PAWNEE	CQ	1917
1.125201		PAWNEE,		1917, 18, 22
1.1663		PAWNEE,		1922, 25

0.4253		PAWNEE		1921
2.4293		PAWNEE	CQ	1932
2.4264		PERRY,		1937
2.4283		PERRY,		1931
2.4293		PERRY	CQ	1940
2.46	CON	PERRY,		1938
2.4664		PERRY,		1922, 26
2.46642		PERRY,		1926
2.469		PERRY	CQ	1926
1.2263		PICHER,		1930
1.1644	ASA	PONCA CITY,		1931D
0.42531		POTEAU		1918
4.4254		POTEAU		1917, 26
2.42673		POTEAU	CQ	1923
1.1644		PRAGUE,		1954
2.46		PRAGUE	CQ	1922
2.46446	PIC	PRAGUE,		1932
4.42736		PRAGUE		1923
4.4274		PRAGUE		1932
7.4643	DLR	PRYOR		1917, 18
4.4274		QUINTON		1926
4.4254		REDROCK		1922
1.166354		REED,		1938
2.46	CON	RINGLING,		1954
2.4653		RINGWOOD,		1938, 45, 48
0.4663		RINGWOOD,		1931D
2.46		ROCKY,		1938
2.469		ROCKY	CQ	1934
2.4214		ROOSEVELT		1926, 30
2.425		ROOSEVELT	CQ	1938
2.4243		RUSH SPRINGS	CQ	1926, 38
2.56		RUSH SPRINGS	CQ	1938
2.64(5/9)		RUSH SPRINGS		1954
2.46	CON	SALLISAW,		1938
2.669		SALLISAW		1938, 54
2.46		SASAKWA,		1926
1.4544		SAYRE,		1926, 31, 32
2.4283		SAYRE	CQ	1923, 31, 38, 40
1.1674		SCIPIO,		1932
2.46	CON	SEILING,		1954
2.6*5(77/75)		SEILING	CQ	1938
1.464405		SEMINOLE, / OK		1959D
4.4254		SEMINOLE		1922, 26

2.4263		SHATTUCK	CQ	1931, 38
2.625		SHATTUCK		1938
7.4643	DLR	SHATTUCK		1917, 21, 22, 23
1.1663	ASA	SHAWNEE,		1908, 18
1.2674	ASA	SHAWNEE,		1917
1.4663		SHAWNEE	CQ	1913, 14
1.4663	VAR	SHAWNEE	CQ	1913
2.46		SHAWNEE	CQ	1913
2.4293		SHIDLER	CQ	1926
2.46	CON	SHIDLER,		1931D, 38
2.425		SLICK,		1917
2.46		SLICK,		1923
1.1253		SNYDER,		1945
2.4283		SNYDER,		1932, 38
2.46		SNYDER,		1945, 54
2.460005		SNYDER, / OK		1979, 85
2.469		SNYDER		1938, 40
1.16		SOPER,		1913
2.46		SPAVINAW,		1954
2.460005	CON	SPAVINAW, / OK		1966
2.42932		SPIRO,		1938
4.4274		SPIRO		1926, 31
0.4284		SPIRO	CQ	1923
2.469		SPIRO		1930
2.469		STIGLER	CQ	1931
1.1263		STILWELL,		1938
2.46		STILWELL,		1954
2.4653		STILWELL,		1938, 45
2.4663		STILWELL	CQ	1940
2.669		STILWELL	CQ	1938
2.469		STROUD,		1922
2.4263		SULPHUR,		1926, 38
2.46		SULPHUR,		1926
2.46	CON	SULPHUR,		1938, 54
2.4653		SULPHUR,		1938
2.625		SULPHUR		1938
2.4214		TAHLEQUAH	CQ	1932
2.4263		TAHLEQUAH	CQ	1926
1.1643		TALOGA,		1963
2.44(5/9)		TECUMSEH	CQ	1938, 40
4.4254		TEXHOMA		1926
2.425		TEXHOMA,		1917, 22
2.46		TEXHOMA,		1926, 38

2.467005		TEXHOMA, / OKLA.		1954
2.669		TEXHOMA		1938
2.46		TEXOLA,		1926, 32
2.4664		TEXOLA,		1917
2.467		THOMAS,		1938
4.4254		THREE SANDS		1926
1.1173		TIPTON,		1938
2.4283		TIPTON,		1931, 38
2.46	CON	TIPTON,		1938-48
2.465		TISHOMINGO,		1922
2.4543		TONKAWA,		1932, 33
2.44(5/9)		TULSA		1954
2.46	CON	TULSA,		1954, 67
2.4644		TULSA, / OK		1968, 75
2.4664		TULSA	CQ	1912
2.625		TULSA		1938
2.64(5/9)		TULSA		1954
2.669		TULSA		1938, 54
7.4673	SLR	TULSA		1917SD, 25SD
0.4674		TULSA		1917
2.4664		TUTTLE		1938
2.466454		VALLIANT,		1938, 54
2.4283		VIAN,		1922
0.1543	PIC	VICI,		1938
1.1664		VINITA,		1922
2.4283		VINITA,		1931, 34
2.4664		VINITA,	CQ	1908
1.1672		VINSON,		1938
2.469		VINSON,		1927, 38
2.44(5/9)		WAGONER		1938, 54
2.46	CON	WAKITA,		1954
1.425		WALTERS	CQ	1934
2.46		WATONGA,		1936, 34
2.46	CON	WATONGA,		1938
2.4663		WATONGA,		1922
2.669		WATONGA		1938
1.51		WAURIKA,		1913
2.46		WAURIKA,		1934, 37, 38, 47
2.46	CON	WAURIKA,		1938, 50, 58
2.4663		WAURIKA,		1930
2.467		WAURIKA,		1954
2.469		WAURIKA	CQ	1939
2.64(5/9)		WAURIKA		1954

1.1673		WAYNOKA,		1961
1.264301		WAYNOKA,		1923
2.4263		WAYNOKA	CQ	1926
2.669		WAYNOKA		1937
2.56		WEATHERFORD	CQ	1908
2.46		WEBB CITY,		1926
2.46	CON	WEBB CITY,		1931
2.4243		WEBBERS FALLS	CQ	1938
1.2644		WELEETKA,		1931
2.46	CON	WELEETKA	CQ	1922
2.4663		WELLSTON,		1934A
1.2644		WEST TULSA STATION, OKLA.	Sta	1923
2.46		WILBURTON,		1926, 31
0.46434		WILBURTON		1917
2.4664		WILSON,		1922, 26
2.1672	PIC	WOODWARD,		1922, 25, 38
2.4254		WOODWARD,		1929, 32, 33
2.465		WOODWARD,		1926, 31D
2.4663		WOODWARD,		1925SD, 26, 30
2.625		WOODWARD	CQ	1931
4.4254		WOODWARD		1922, 23
2.4214		WYNNE WOOD	CQ	1926
2.469		YALE		1939
2.44(5/9)		YUKON		1955
2.46002		YUKON		1917
2.4644		YUKON,		1917
2.4664		YUKON	CQ	1914
2.4664	VAR	YUKON,		1922, 23, 32
2.467		YUKON,		1954